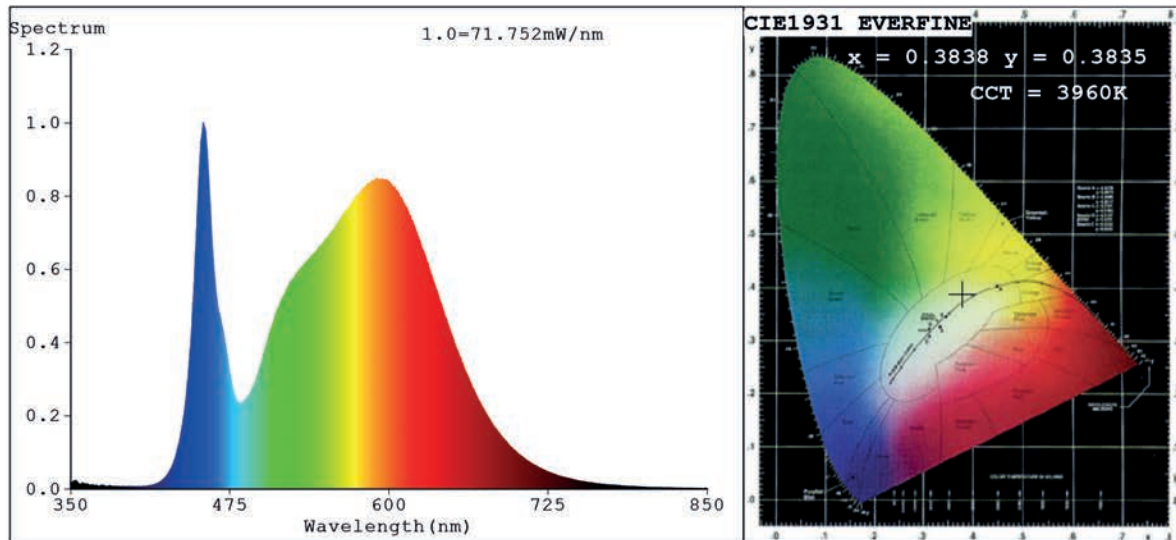


Spectrum Test Report



Color Parameters:

Chromaticity Coordinate: $x=0.3838$ $y=0.3835$ $u'=0.2246$ $v'=0.5050$
 CCT=3960K(Duv=0.0022) Dominant WL:Ld =578.1nm Purity=30.3%
 Ratio:R=18.1% G=78.4% B=3.5%;;Peak WL:Lp=454.3nm FWHM=19.6nm
 Render Index:Ra=81.3 CRI=73.9 TM30:Rf=80 Rg=93
 R1 =79 R2 =89 R3 =95 R4 =78 R5 =79 R6 =84 R7 =85
 R8 =61 R9 =1 R10=73 R11=76 R12=55 R13=82 R14=97 R15=73

Photo Parameters:

Flux = 3472 lm Eff. : 162.38 lm/W Fe = 10.36 W

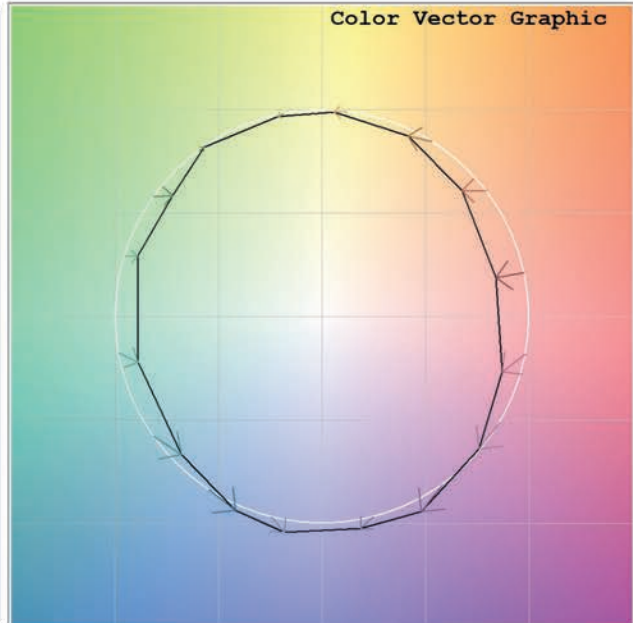
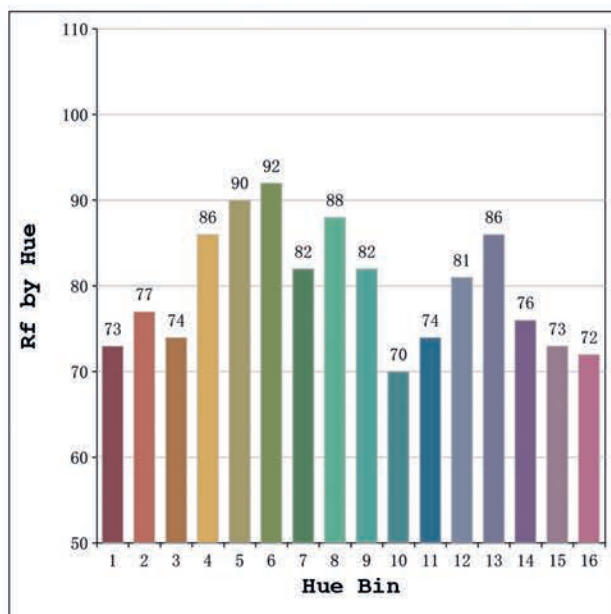
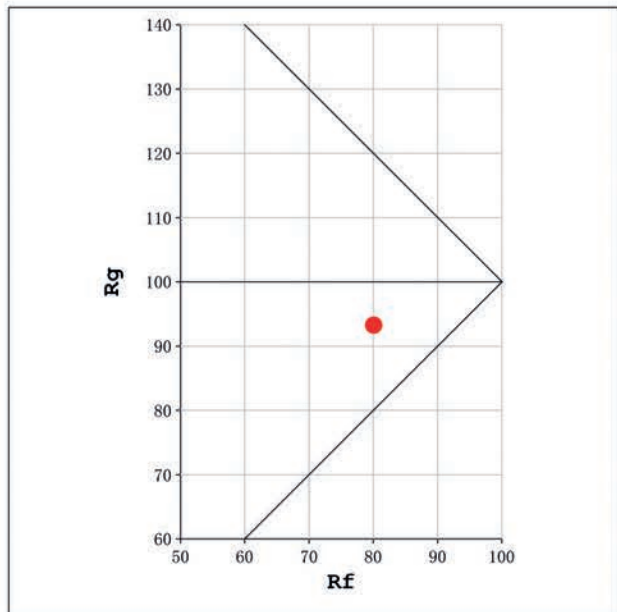
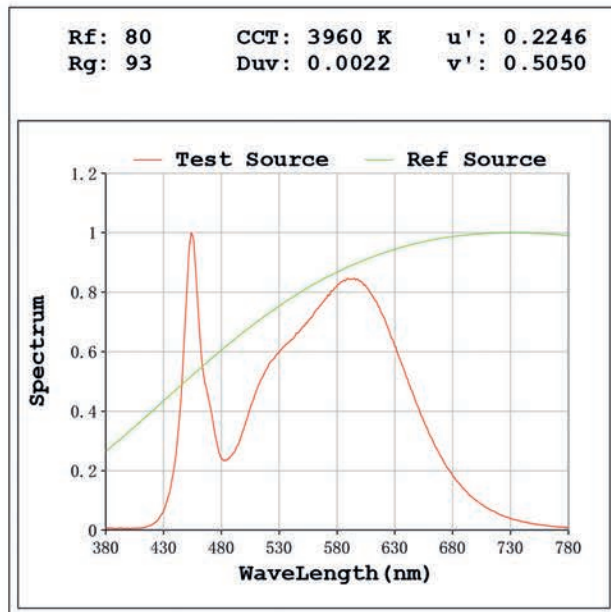
Electrical parameters:

V = 23.998 V I = 0.8911 A P = 21.38 W PF = 1.000

Status: Integral T = 276 ms Ip = 34016 (52%)

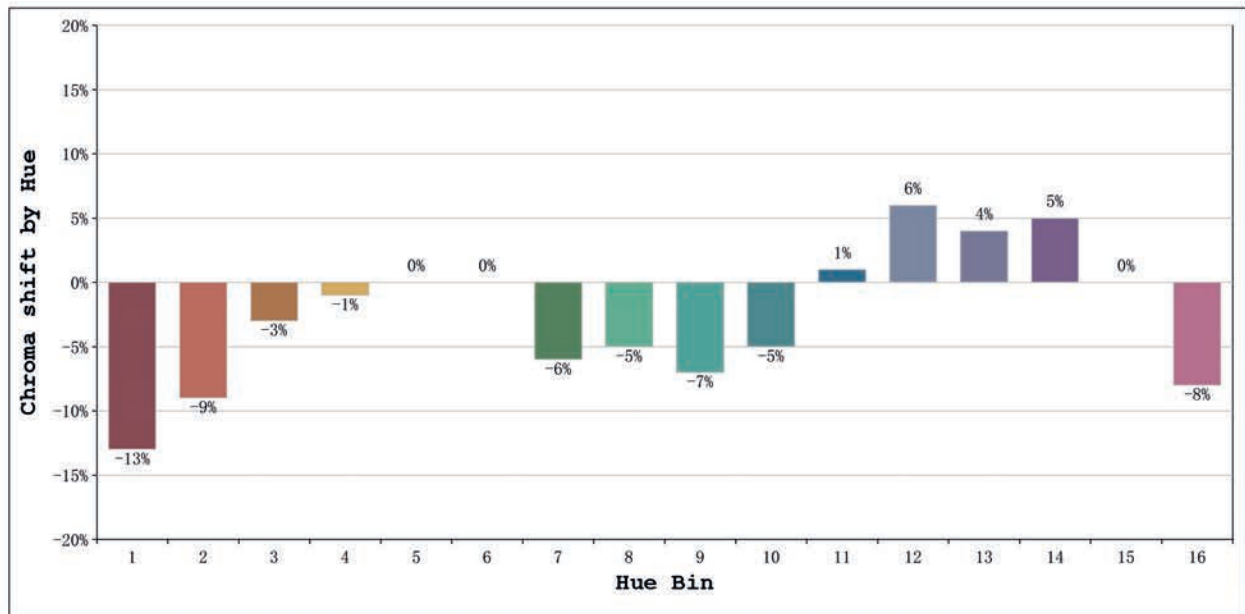
Model:Ecoled Altea 4000k
 Tester:Sergio Carneros
 Temperature:25Deg
 Manufacturer:Luz Negra

Number: 31.224
 Date:2025-07-24 14:16:24
 Humidity:50%
 Remarks:100cm de tira flexible



Model:Ecoled Altea 4000k
 Tester:Sergio Carneros
 Temperature:25Deg
 Manufacturer:Luz Negra

Number: 31.224
 Date:2025-07-24 14:16:24
 Humidity:50%
 Remarks:100cm de tira flexible



			Graphic shift(%)	
Hue Bin	Hue Angle	Rf	Chroma	Hue
1	0.0° - 22.5°	73	-13	0
2	22.5° - 45.0°	77	-9	7
3	45.0° - 67.5°	74	-3	11
4	67.5° - 90.0°	86	-1	6
5	90.0° - 112.5°	90	0	3
6	112.5° - 135.0°	92	0	-2
7	135.0° - 157.5°	82	-6	-5
8	157.5° - 180.0°	88	-5	0
9	180.0° - 202.5°	82	-7	7
10	202.5° - 225.0°	70	-5	15
11	225.0° - 247.5°	74	1	16
12	247.5° - 270.0°	81	6	8
13	270.0° - 292.5°	86	4	-6
14	292.5° - 315.0°	76	5	-15
15	315.0° - 337.5°	73	0	-15
16	337.5° - 360.0°	72	-8	-9

Model:Ecoled Altea 4000k
 Tester:Sergio Carneros
 Temperature:25Deg
 Manufacturer:Luz Negra

Number: 31.224
 Date:2025-07-24 14:16:24
 Humidity:50%
 Remarks:100cm de tira flexible